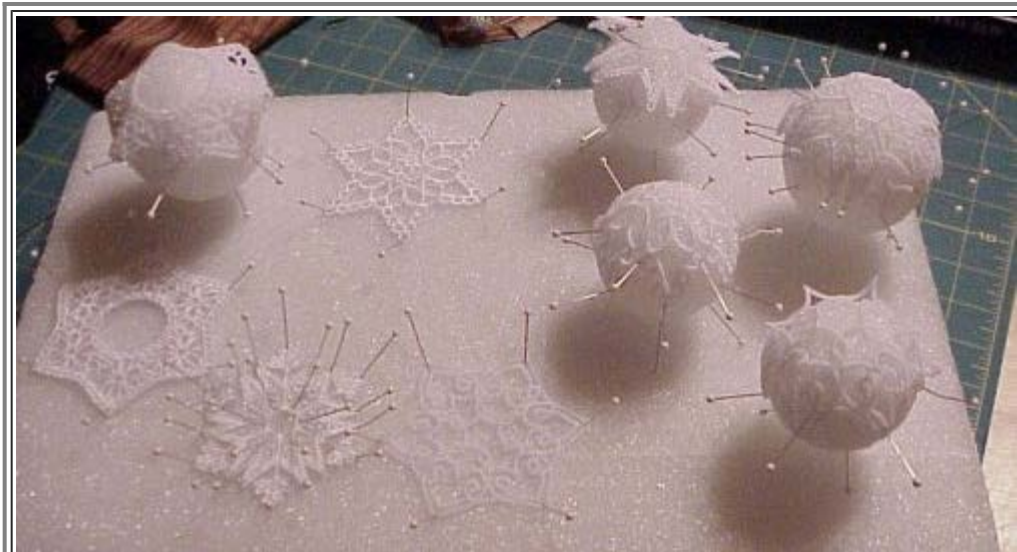
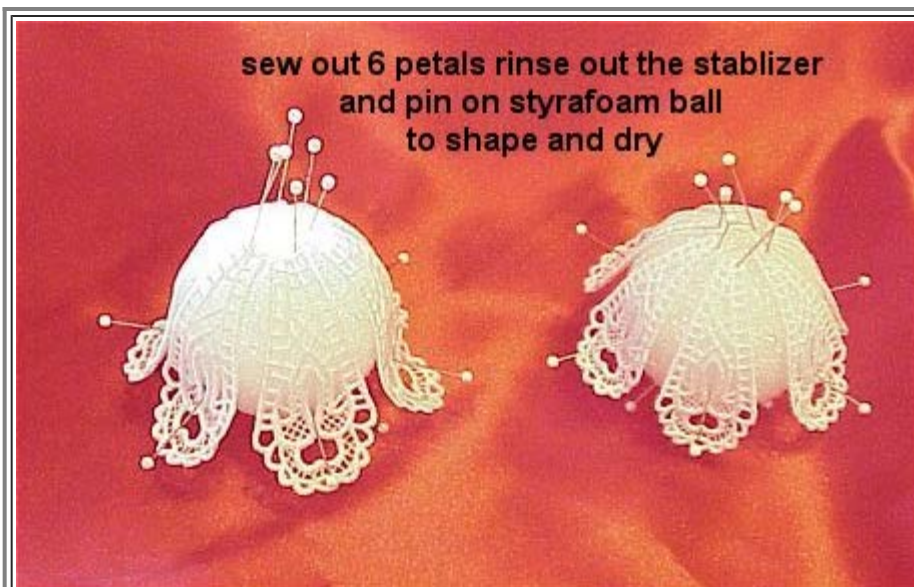


Ornament Cover Instructions



Pin on styrafoam to dry flat



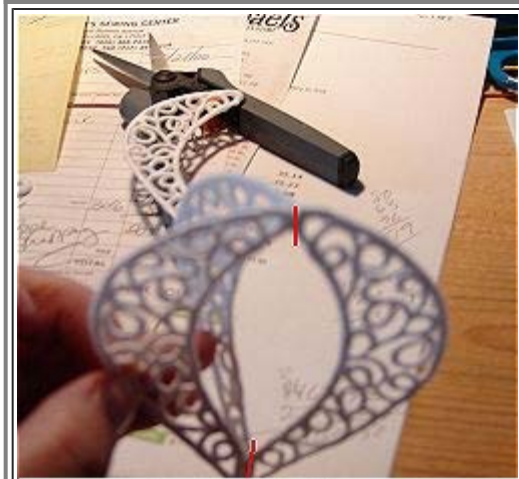
or shape in Styrofoam Balls

**Ornament cover 1 ,is assembled a bit different.
Each petal is glued to the top of the glass ball,
all others are form fitting..**

1997 © 2006

[Skeldale House](#)

Scroll Tear Drop Ornament



**put glue on the joining spots
shown by the red lines
let the 6 parts get tacky
before assembling**

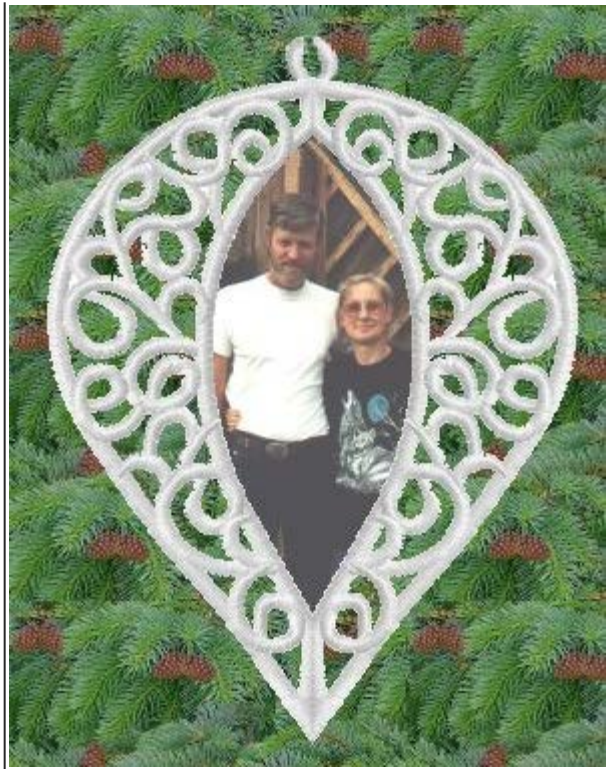
Sew out 6 parts



**once all are glued together
center the sides**



Glue a hook to the top



**by gluing 2 together
you can use as picture ornament frame
and yes thats Bill and Me**

1997 © 2006
[Skeldale House](#)

Sleigh Instructions

Santa's Christmas Sleigh



Free Standing Lace

Available Formats DST, HUS, JEF, PES, VIP, VP3, XXX,

Can be used as single ornaments
or as 3D Sleigh ornaments, party favor holders

Design's are Stand alone Lace
I used 2 layers of Vilene,
number 12 schmetz universal needle,
40 weight Madeira Rayon thread top
and serger cone thread on the bobbin,
Rayon can be used



Sew out 2 sides and 1 each bottom
Pin to a styrafoam board and rinse
let dry

Sew out the color co-ordinated parts for the sleigh
pin to styrafoam rinse and let dry



When dry,
run a bead of Allen's fabric Glue along the lines
shown
let it get tacky

along the black dotted line run a bead of glue
let get tacky



Take the 2 sleigh bottoms.
smaller one is the sled back
run a glue bead along one side of each and let get tacky
apply to the sleigh side and let dry



Now run a bead down the bottoms,
and the other sleigh side let get tacky
and place on top of the Bottom . Let dry

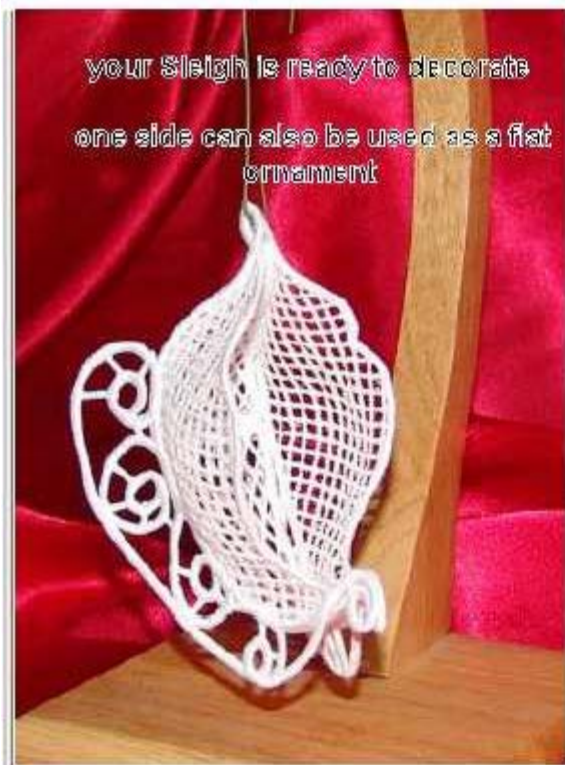


**Looks like this now
let dry well**

Now it looks like this Let dry WELL



**Once dry, Take a small styrofoam Ball or egg
and insert in the sleigh gently
take a spray bottle
and spray gently the sides pushed by the egg.
let dry**



your Sleigh is ready to decorate
one side can also be used as a flat
ornament

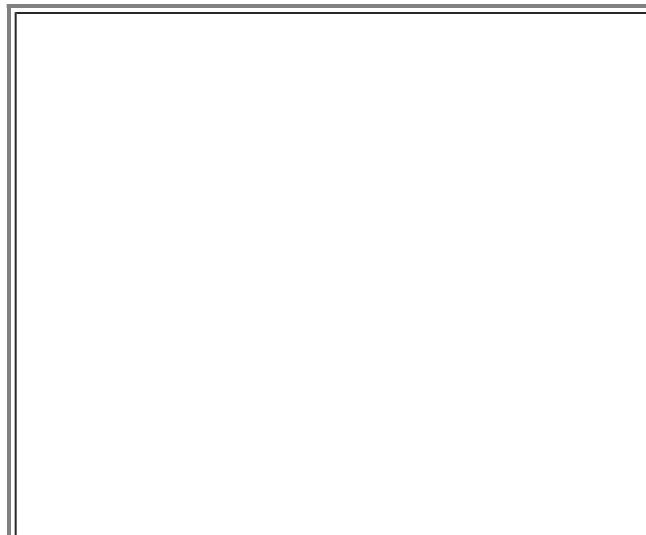
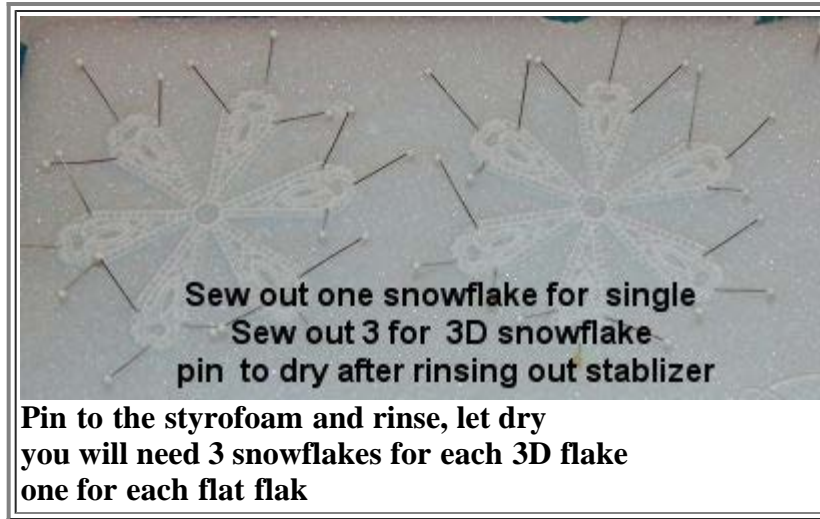
Your sleigh is now ready to fill and decorate



I am working on one with holly and pearls

1997 © 2013
[Skeldale House](#)

Snowflake Instructions





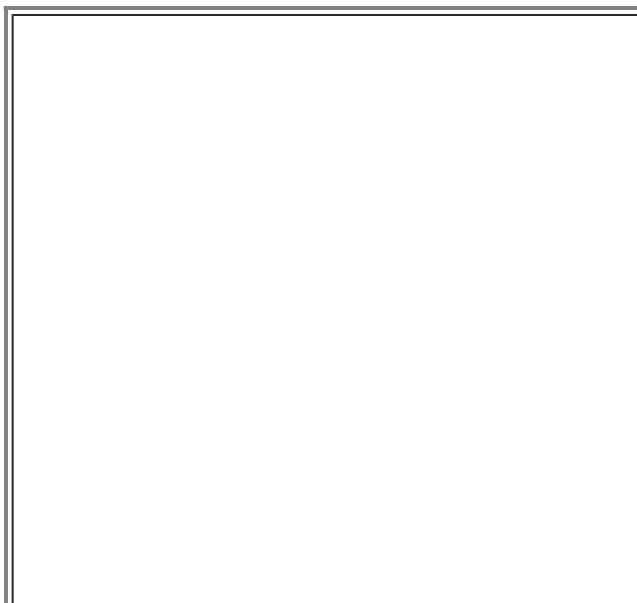
Dip in glue and let sit till tacky

**find the meeting points at the center
and dab with aleen's fabric glue, let get tacky**



3 glued together

Put to gether and let dry





once dry you can spread the parts to be even



Flat snowflake

1997 © 2006

[Skeldale House](#)