

Bushel of Lace Baskets and Doilies Set 4

These are done in Pfaff Creative Designer Software
The full designs were made on the Pfaff 120mm x 115mm

Designs are Free Standing

Available Formats DST, HUS, JEF, PCS, PES, VIP, XXX,
and SEW, larger size is slightly smaller than the designs specifications for the other format



**This set includes a four sided basket,
a five sided basket
and a 6 sided basket
in 2 Sizes,
also included in 2 sizes , the doily,
10 and 13 inches
Each of the bottoms can be made into Many items,
dresser scarves, table toppers
even a Bed spread if you are so inclined**



**Close up of the pattern on the
6 sided basket,
it is a low wide basket**

Directions and Specifications

**Design's are Stand alone Lace
Instructions Included for assembly
I used 2 layers of badgemaster,
number 12 schmetz universal needle,
40 weight Madeira Rayon thread top and bottom
I did not washout the badgemaster, but it can be and then starched..
I happen to like the sparkle look with it left in.**

The Doily



**Sew out 8 Petals, 10026 and one center 10027
or 10026A and one center 10027A
Zig Zag your Pieces together all but
the last Seam,**



Sew in the basket Bottom



**and sew up the last seam
Voila' Doily all done
you can now wash out the stabilizer
and starch or you can leave some of the
badge master in for stiffness**

The Basket



Sew out Petals, 10022 and one center 10023, 24 or 25

or 10022A and one center 10023A, 24A, or 25A

Zig Zag your Pieces together all but the last Seam, or sew to the bottoms first. can be done either way

Sew the areas shown.. you do not have to tack the rounded area shown..



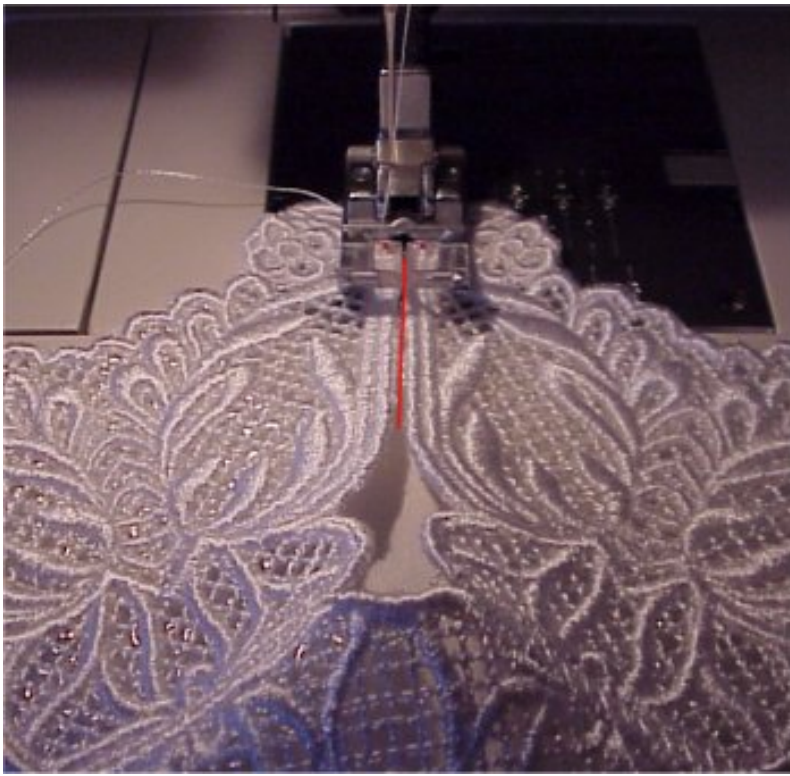
Before you sew in the basket center, you can wash out the stabilizer and starch or leave some in some stabilizer for stiffness, and then when dry, sew your Center in or you can do before washing out, And then sew up the last seam



This shows sewing the sides to the center first



5 sided one, sew where the red lines are, as shown above



Sewing up the sides,, red lines show the sew areas



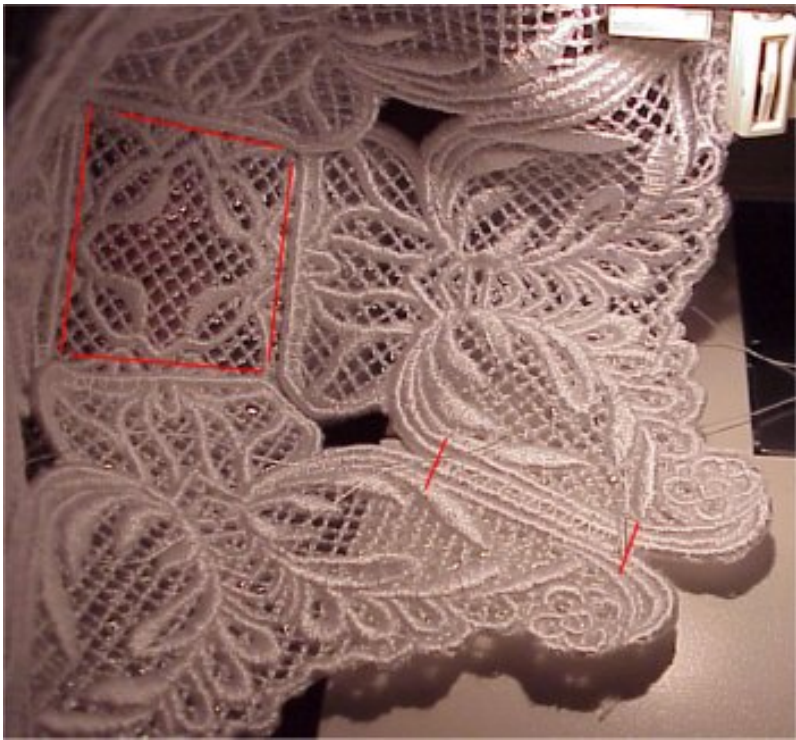
Sewing the last seam from the top



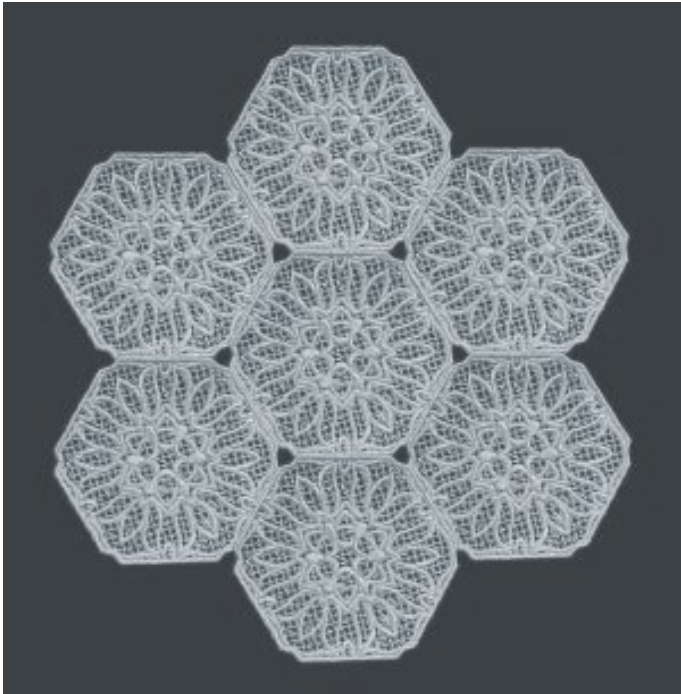
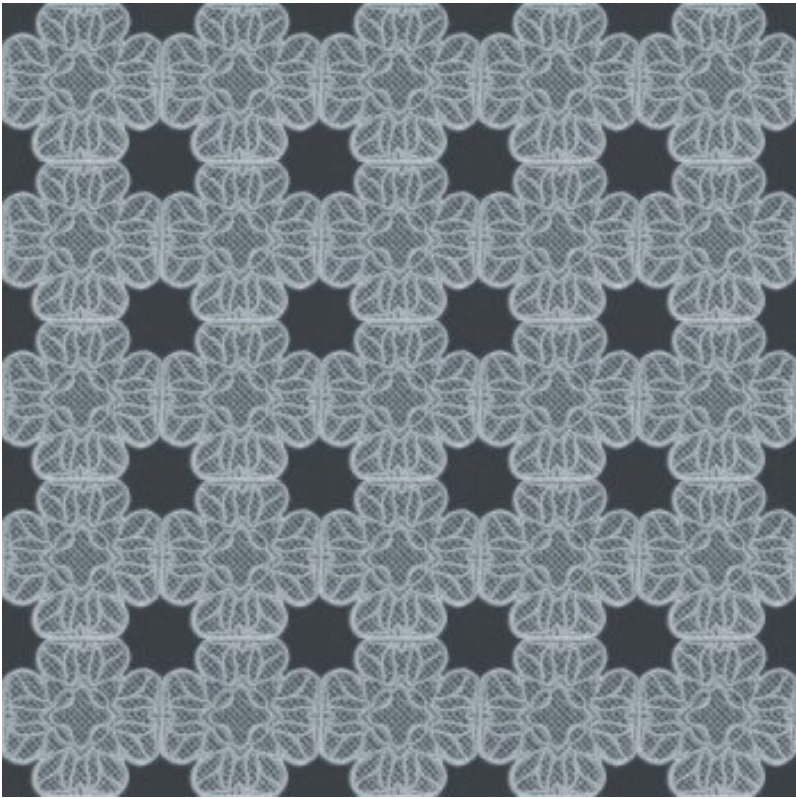
the 4 sided basket has a saucer like Lip.. sew as shown.. Use a loose zig zag as you will want this to act like a hinge



Now sew up the sides



this shows the center of the 4 sided basket



**Mats and table topper made with the centers..
Borders can also be made from the Basket petals**

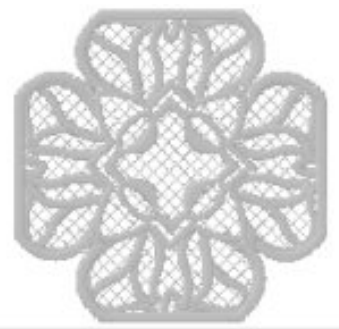




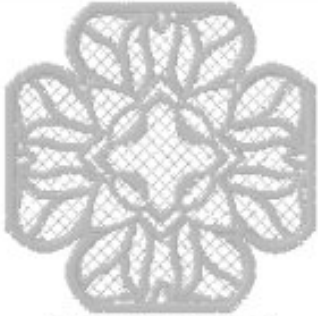
10022.pcs, St:16538
76.6 x 88.0 mm, Cl:1



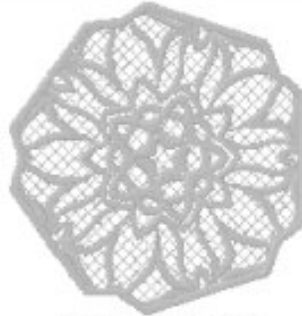
10022a.pcs, St:16539
104.5 x 120.0 mm, Cl:1



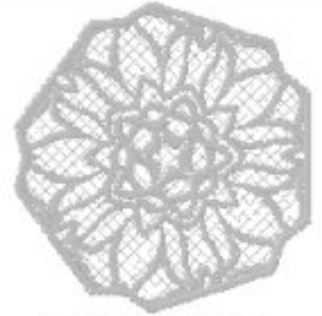
10023.pcs, St:16530
78.5 x 78.5 mm, Cl:1



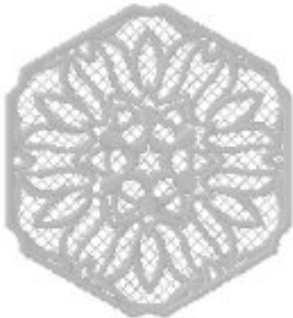
10023A.PCS, St:16531
104.9 x 105.0 mm, Cl:1



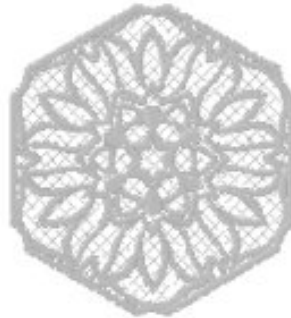
10024.pcs, St:17436
80.2 x 84.2 mm, Cl:1



10024A.PCS, St:17437
109.9 x 115.3 mm, Cl:1



10025.pcs, St:17595
77.3 x 84.4 mm, Cl:1



10025A.PCS, St:17596
105.2 x 114.9 mm, Cl:1



10026.pcs, St:16057
77.5 x 87.7 mm, Cl:1



10026A.PCS, St:16059
97.2 x 110.0 mm, Cl:1



10027.pcs, St:18813
85.6 x 85.9 mm, Cl:1



10027A.PCS, St:18814
114.8 x 114.8 mm, Cl:1

10 inch Doily (small) 13 inch Doily (large)

8 Petals #10026 8 Petals #10026A

1 Center # 10027 1 Center # 10027A

4 sided Bowl (small) 4 sided Bowl (large)

4 Petals #10022 4 Petals #10022A

1 Center #10023 1 Center #10023A

5 sided Bowl (small)	5 sided Bowl (large)
5 Petals #10022	5 Petals #10022A
1 Center #10024	1 Center #10024A
6 sided Bowl (small)	6 sided Bowl (large)
6 Petals #10022	6 Petals #10022A
1 Center #10025	1 Center #10025A

1997 © 2004

<http://www.skeldalehouse.com/>
Skeldale House