

Basic Basket Assembly



This basket has very simple assembly.. One bottom and 6 petals to this a basket..or match the 5 sided or 4 sided .. I use a standard zig zag stitch number 3 width to sew to gether.. Not a satin stitch



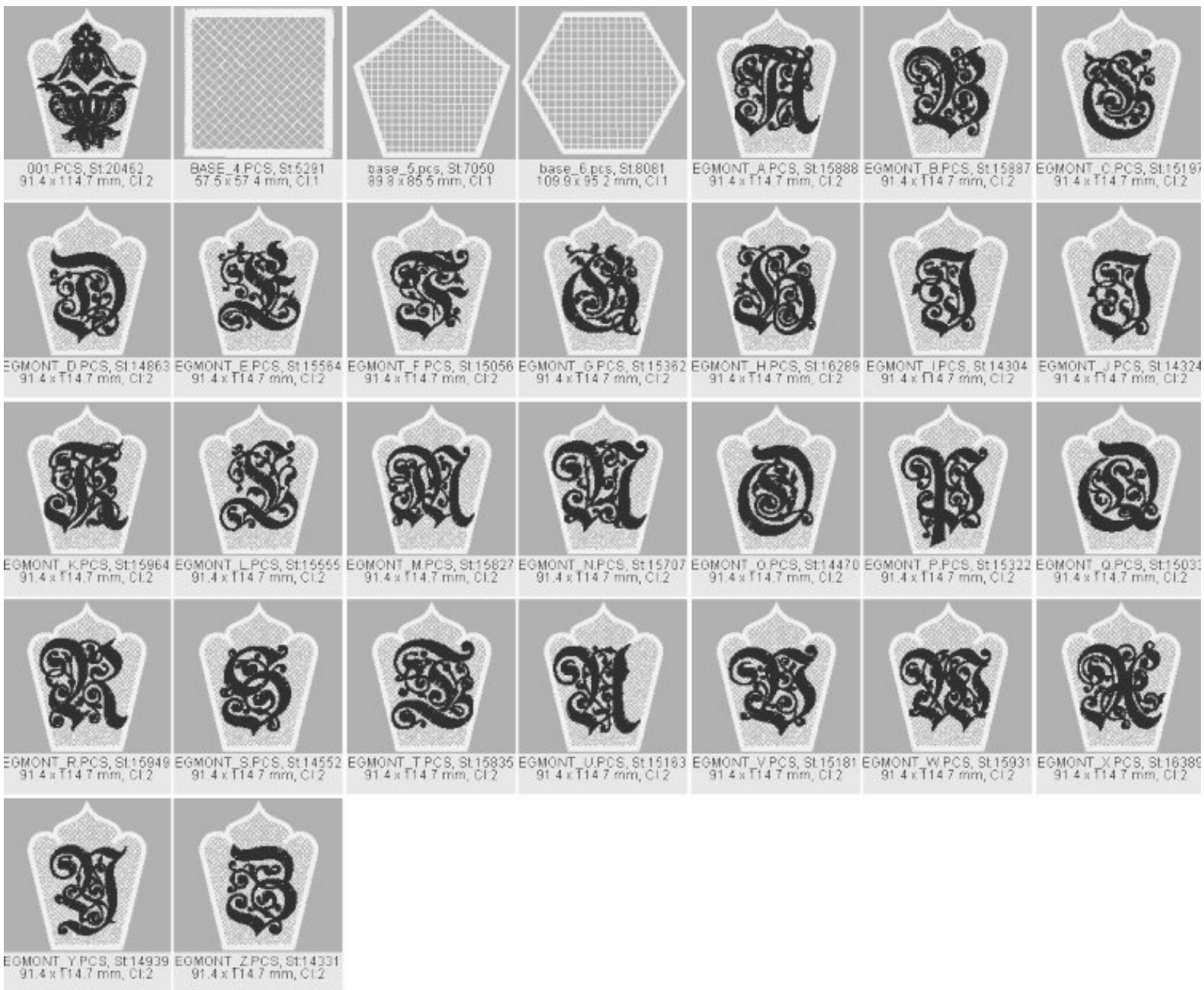
Sew all petals to gether leaving one side open



This shows the actual sewing to gether. place the base as shown and sew all around to the end



**This shows the last part to be sewn together.Slightly turn and sew up the last petals to gether Voila done
For those that want to wash and then assemble and starch.. trace the petals 6 times on paper, and use them as a pinning guide to make sure they are all the same size when dry**



1997 © 2005

<http://www.skeldalehouse.com/>

Skeldale House