

ITH Applique' 2012 Christmas Poinsettia

Available Formats
DST, EXP, JEF+, PES, VP3







I do give you a pattern design to use to cut your pieces needed manually

Directions

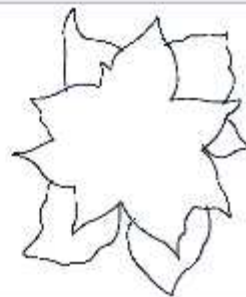
Supplies you will need
Fabric, Stabilizer, or batting
Steam a Seam Lite II
or Therm O Web HeatnBond Lite
Clover Mini Iron -- I use the clover mini iron II
I see no other way to do this, with out this small iron
Reg medium stabilizer for using for the pattern pieces.

Design Specifications



Stitches: 17360
Width: 181.6 mm
Height: 184.7 mm

2012_poinsettia_01.pes



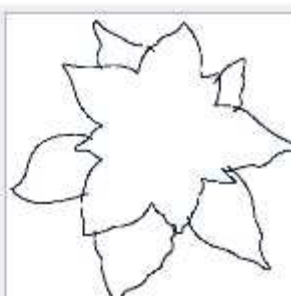
Stitches: 635
Width: 145.3 mm
Height: 172.5 mm

2012_poinsettia_01p.pes



Stitches: 15916
Width: 176.5 mm
Height: 164.8 mm

2012_poinsettia_02.pes



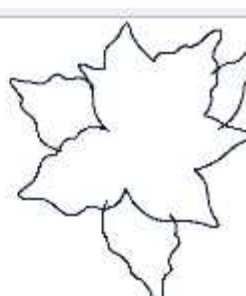
Stitches: 566
Width: 153.2 mm
Height: 150.7 mm

2012_poinsettia_02p.pes



Stitches: 10193
Width: 148.4 mm
Height: 150.4 mm

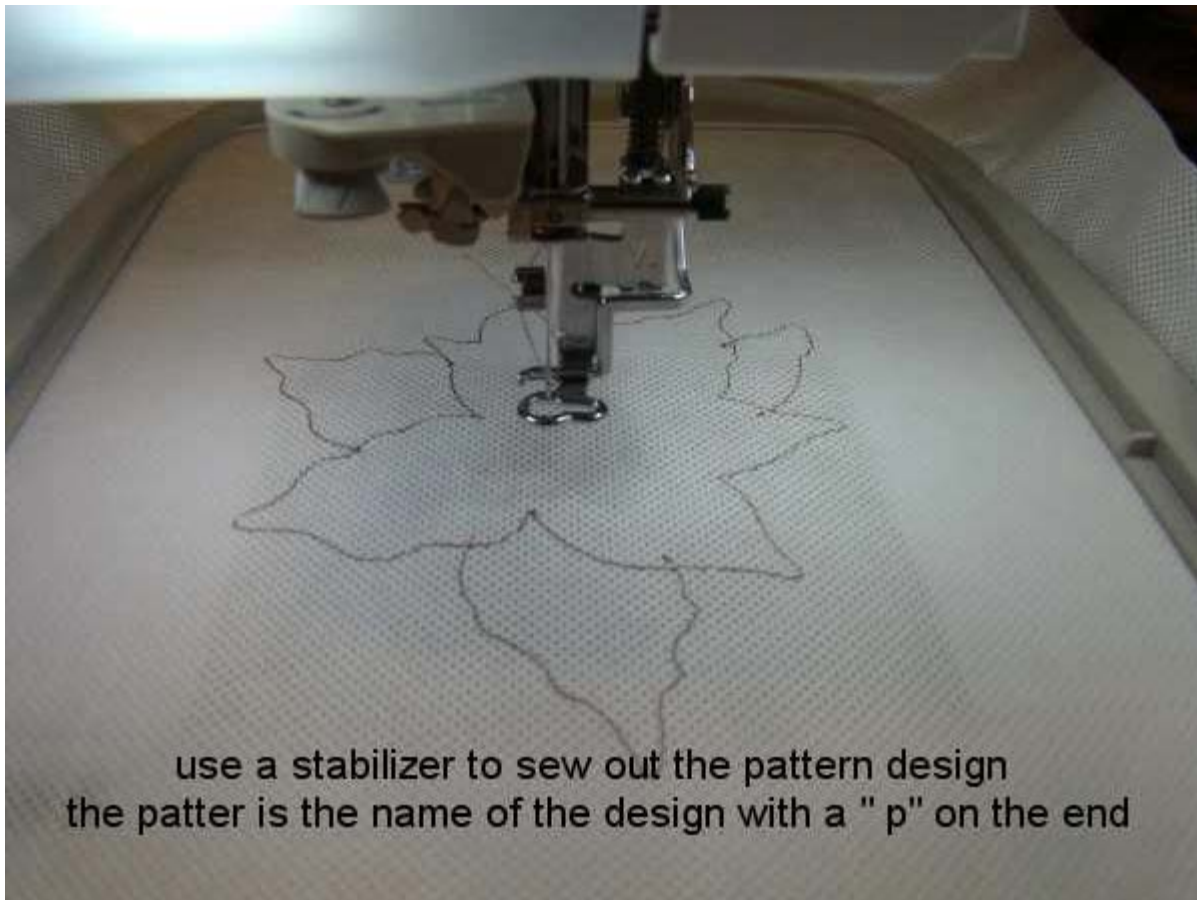
2012_poinsettia_03.pes



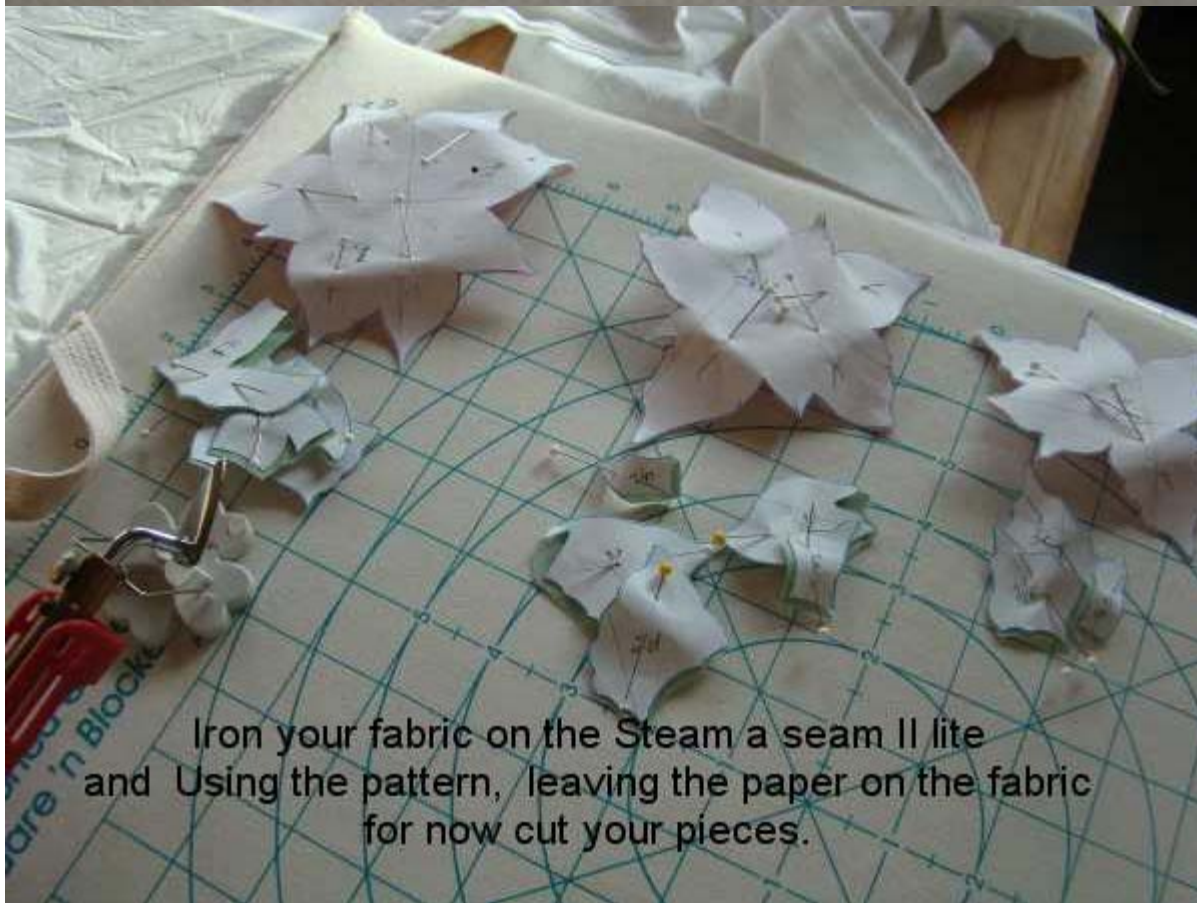
Stitches: 403
Width: 101.8 mm
Height: 119.1 mm

2012_poinsettia_03p.pes

Instructions



use a stabilizer to sew out the pattern design
the patten is the name of the design with a " p" on the end



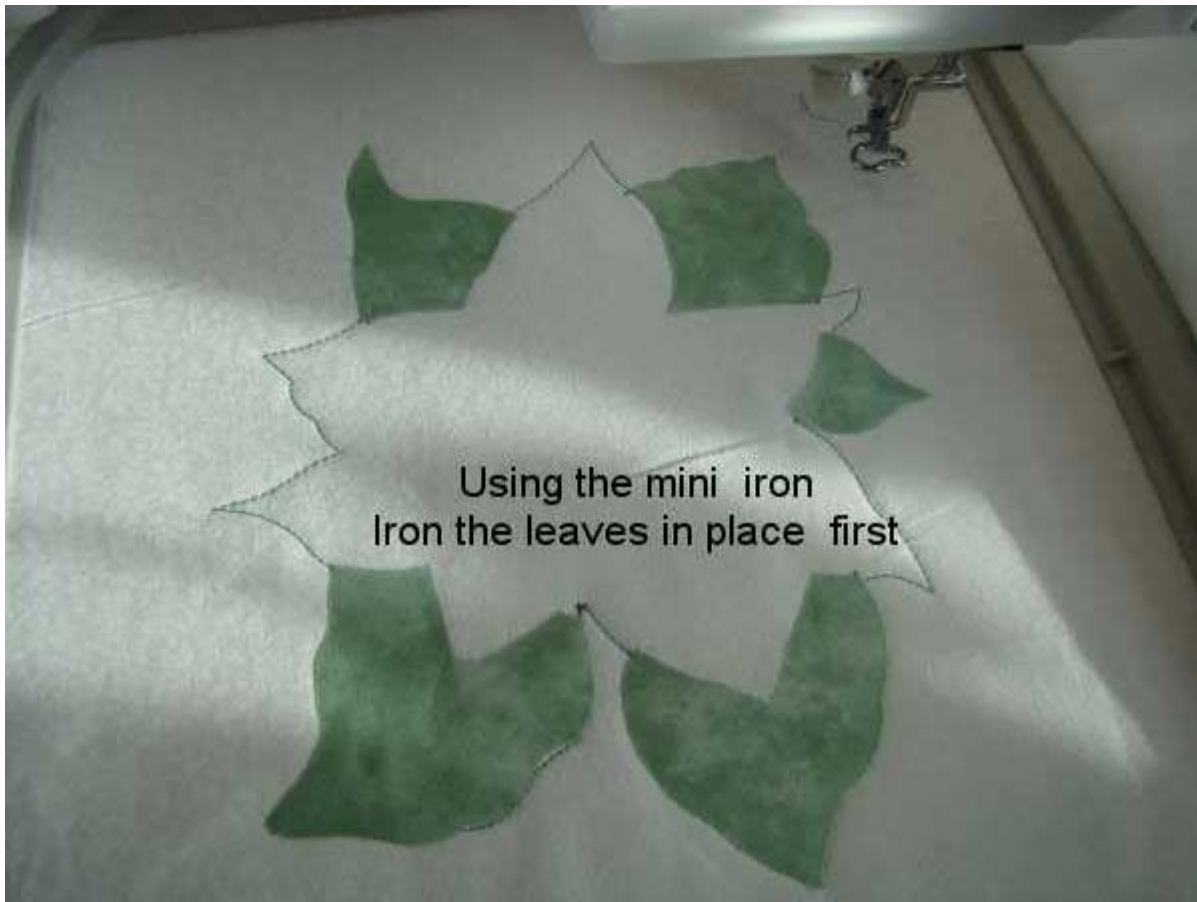
Iron your fabric on the Steam a seam II lite
and Using the pattern, leaving the paper on the fabric
for now cut your pieces.



Notice when I cut the pieces
I left a bit of extra fabric
on the sides that the petals overlap



Now stabilize your fabric and
sew the first color of the design
This will be your placement of the applique' pieces



Using the mini iron
Iron the leaves in place first



Then embroidery the Green



1997 © 2013

[Skeldale House](#)